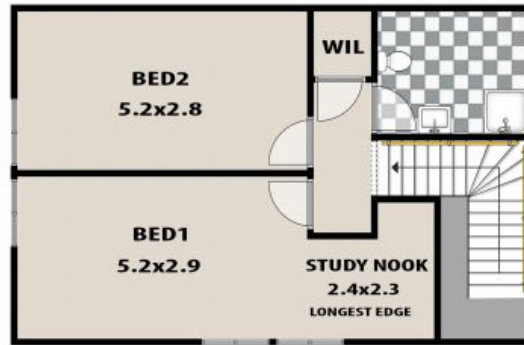




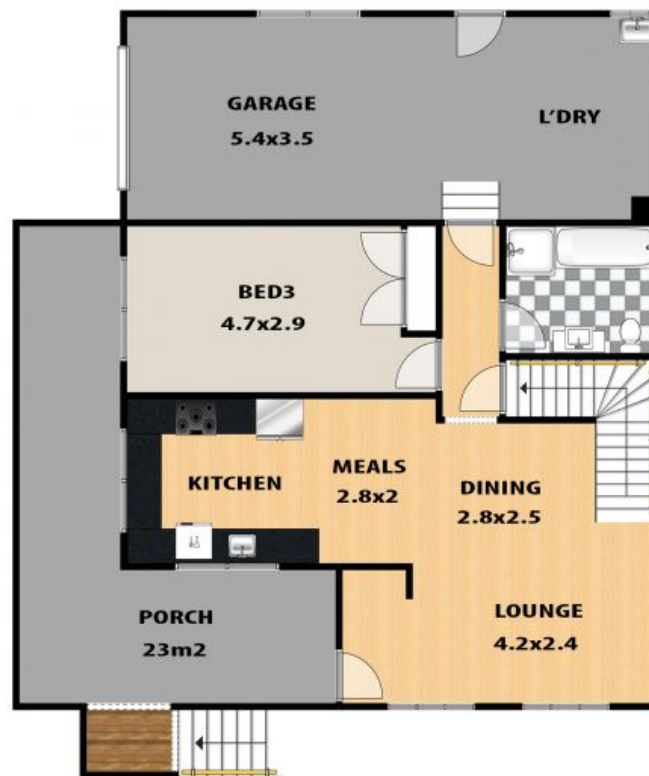
QUINTESSENTIAL MOUNTAIN COTTAGE

Perfectly positioned on the high side of the street, with a stunning leafy outlook and bathed in natural light, this charming and well-maintained weatherboard cottage is located just 700m from the Blackheath village. It possesses all the style, comfort and convenience you've been looking for.

The spacious and modern open-plan kitchen provides a seamless connection with both the living room and the verandah, offering the perfect spaces for both everyday living and effortless entertaining in style with a leafy backdrop. Also on the ground floor is the north-facing first bedroom with a built-in wardrobe and a modern bathroom directly across from it. The cottage has convenient internal access t



FIRST FLOOR



GROUND FLOOR

LEGEND



BATHROOM
ENSUITE : WC



LAUNDRY

30 MINYAGO STREET, BLACKHEATH

This floor plan and/or site plan is an approximation for illustration purposes only. All measurements are approximate and not guaranteed to be exact or to scale. Interested parties should confirm measurements by their own means.

