

159 Blaxland Road Wentworth Falls, NSW



5



2



3



## TIMELESS STYLE & SO MUCH SPACE

Privately positioned on over 1,853sqm of established gardens and expansive lawns in a highly sought pocket of Wentworth Falls, this timeless weatherboard family home provides so much space in a beautiful setting just a convenient stone's throw to the country club, lake and the village.

High ceilings, a neutral colour scheme, polished timber floorboards, exposed brickwork, lovely timber joinery and various garden aspects through large windows all come together to create a home of warmth and light. The spacious, well-equipped gourmet timber kitchen connects seamlessly with the north-facing family room, meals area and the fabulous decking outside, providing perfect indoor / outdoor entertaining spaces with a gorgeous outlook. The formal lounge and dining room at the front of the home is an absolute delight with it's freestanding slow combustion wood heater and so

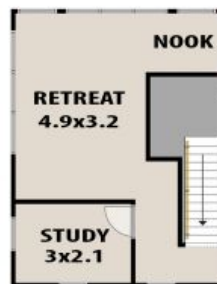
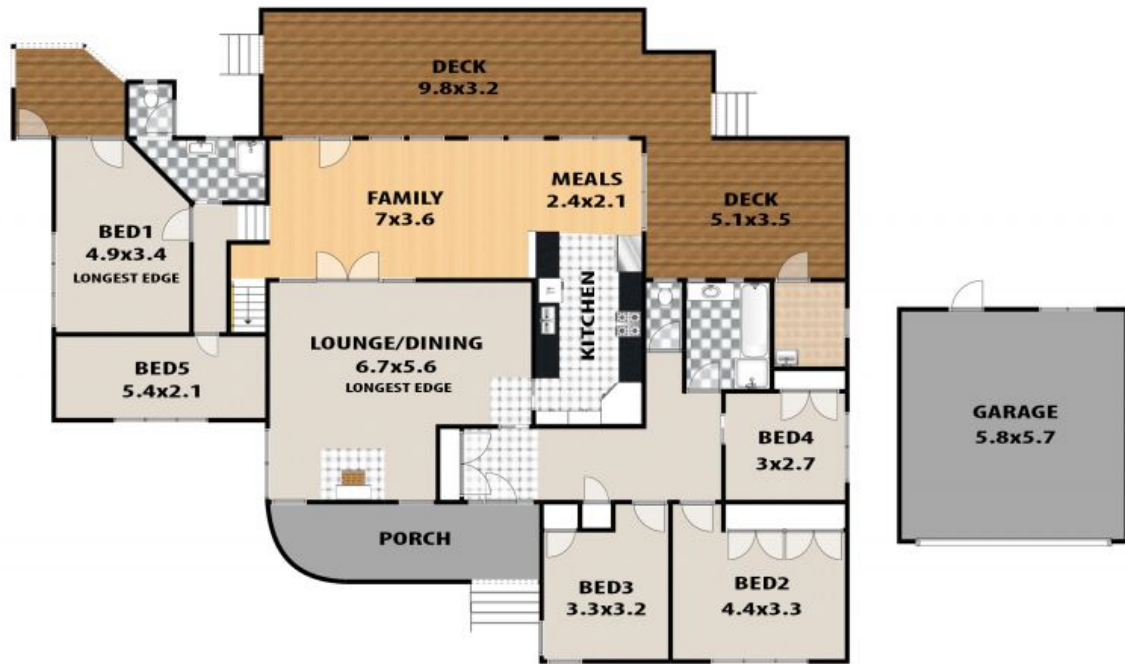
**Inspect:**

Saturday, 18th May 2024 1:00 - 1:30

Saturday, 1st June 2024 1:00 - 1:30

**Council Rates:** \$869.00 p/q

**Water Rates:** \$175.00 p/q



**LEGEND**



**UPPER LEVEL**



**159 BLAXLAND ROAD, WENTWORTH FALLS**

This floor plan and/or site plan is an approximation for illustration purposes only. All measurements are approximate and not guaranteed to be exact or to scale. Interested parties should confirm measurements by their own means.

