

4 Pritchard Street Wentworth Falls, NSW



3



2



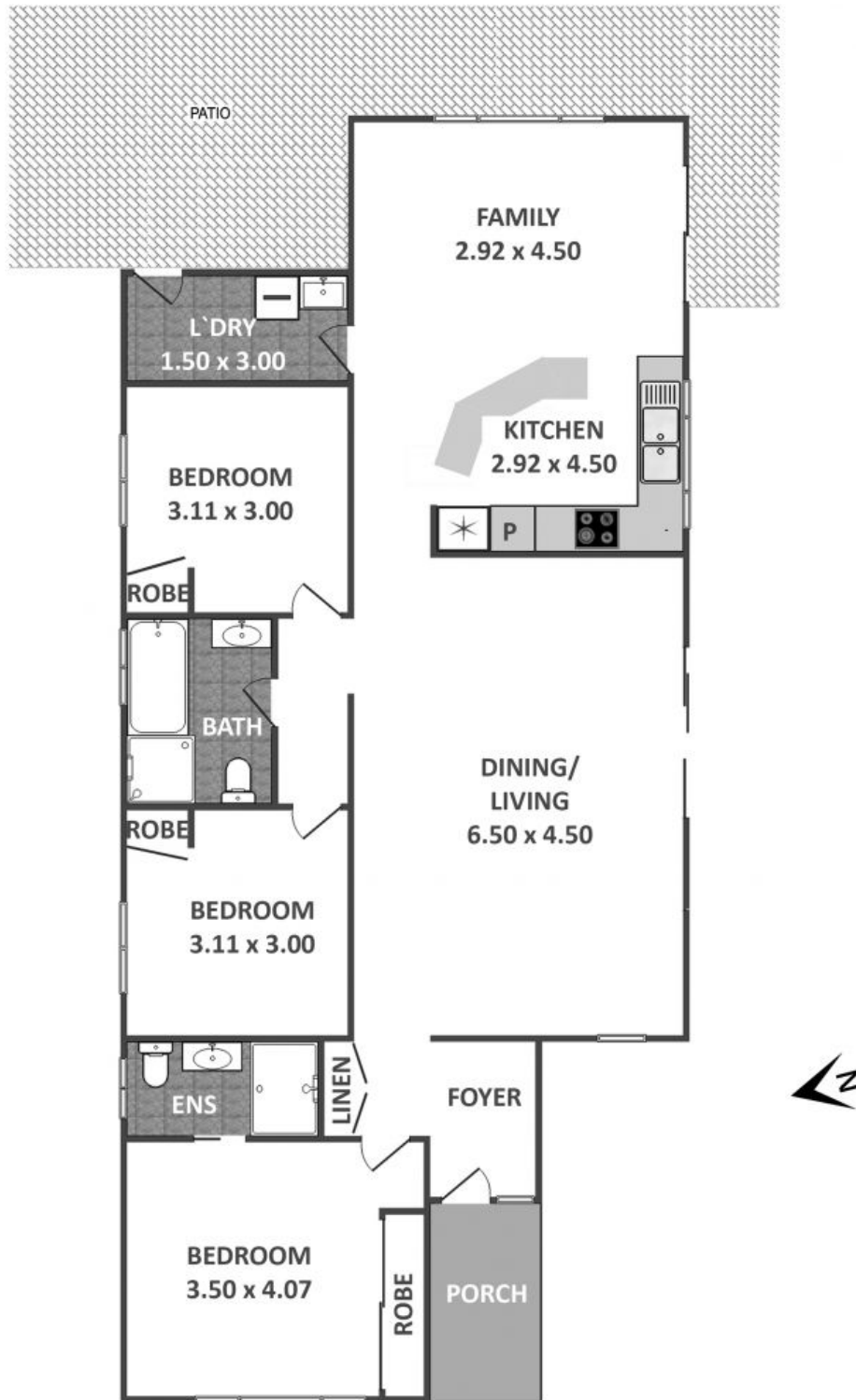
2



QUALITY FAMILY HOME IN GREAT LOCATION

This beautifully presented modern family residence is positioned on a gently sloping block, featuring easy level access and a sunny low-maintenance yard. The spacious interior includes open-plan formal living and dining plus a family living area and fabulous contemporary kitchen, with curving breakfast bar and stainless steel appliances, as well as access to a sensational full-width rear patio.

- ? Three dbl bedrms with built-ins plus master ensuite
- ? Bathroom with full bath & sep shower plus sep laundry
- ? Multiple off-street parking plus potential for carport
- ? Only moments to schools & Wentworth Falls Village



Plans shown are for presentation purposes only and are not part of any legal document or title. They are subject to errors, omissions, inaccuracies and should not be used as a sole and accurate reference. Interested parties should make their own inquiries using independent sources.

4 Pritchard Street Wentworth Falls

Century 21

4 Pritchard Street

Wentworth Falls, NSW