

18 Borrowpit Road Meadow Flat, NSW



4



2



4



"BILIRR" COUNTRY RETREAT IN MT HAVEN ESTATE

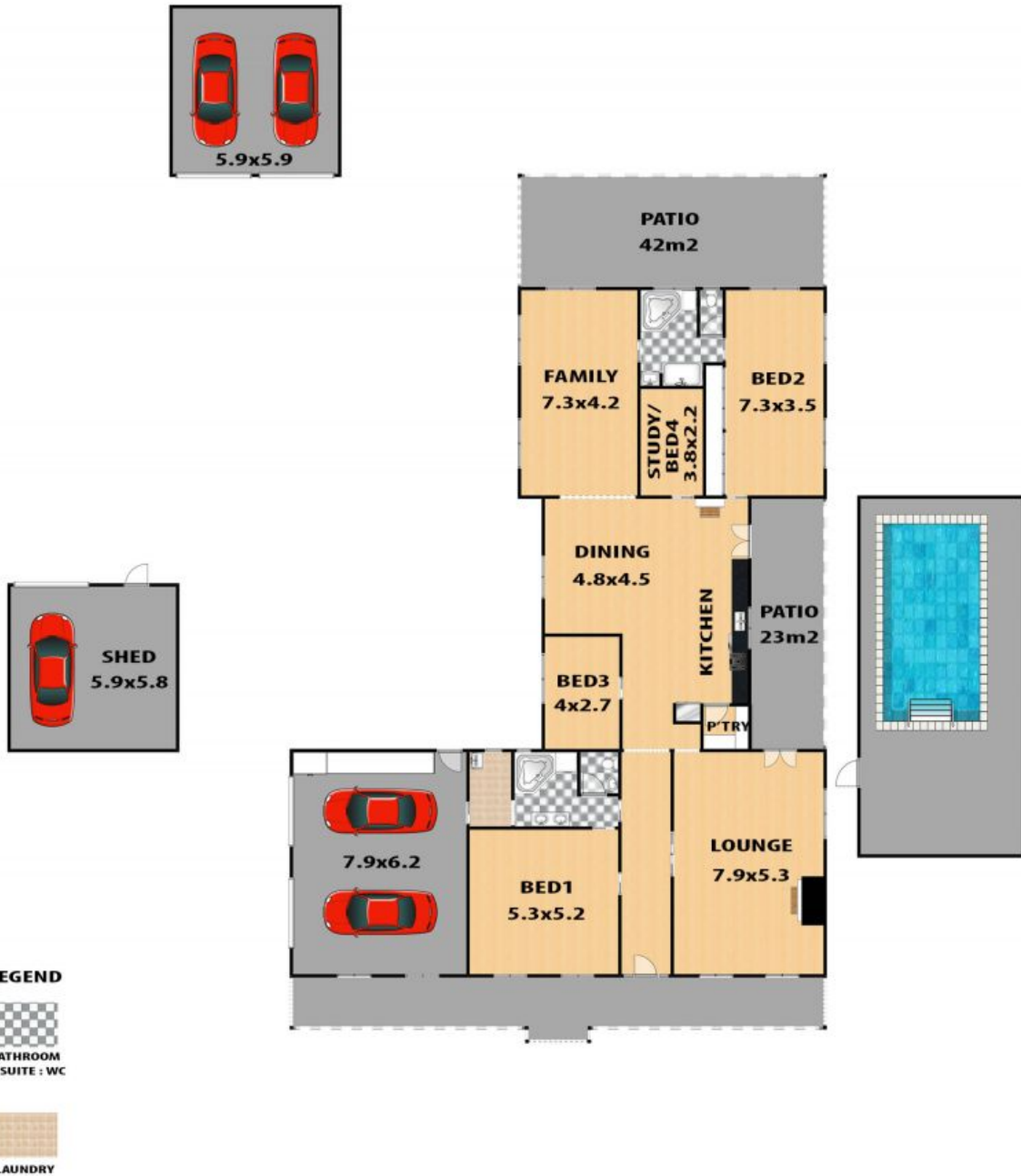
Epitomising the idyllic allure of the majestic bushland, rolling hills and open spaces of Meadow Flat, this exquisite residence rests on almost seven acres of beautiful land in the picturesque Mount Haven Estate.

Offering an enviable lifestyle of peace, privacy and tranquillity with every modern convenience, this country sanctuary is perfectly located between Bathurst and Lithgow, and just a 10-minute scenic drive to Tarana's Hotel and Mumma Snow's Country Kitchen.

Flawlessly presented and recently renovated, the stunning interiors of high ceilings offer a superb interplay of light, space and colour, with the kitchen and living areas featuring French doors which flow directly out to a f

Council Rates: \$204.00 p/q

Strata Rates: \$403.00 p/q



18 BORROWPIT ROAD, MEADOW FLAT

This floor plan and/or site plan is an approximation for illustration purposes only. All measurements are approximate and not guaranteed to be exact or to scale. Interested parties should confirm measurements by their own means.

