



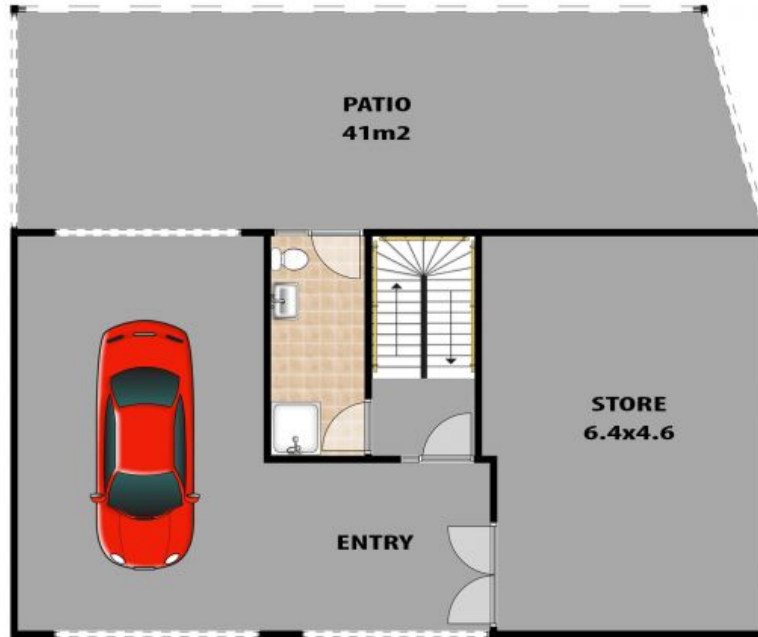
## RENOVATED HOME WITH FILTERED VIEWS ON 1,461m<sup>2</sup>

Positioned on a cleared level block of 1,461m<sup>2</sup> on the high side of the street in a peaceful pocket of Wentworth Falls, this updated brick home with filtered escarpment views provides great space and versatility for the modern day lifestyle in a fabulous location.

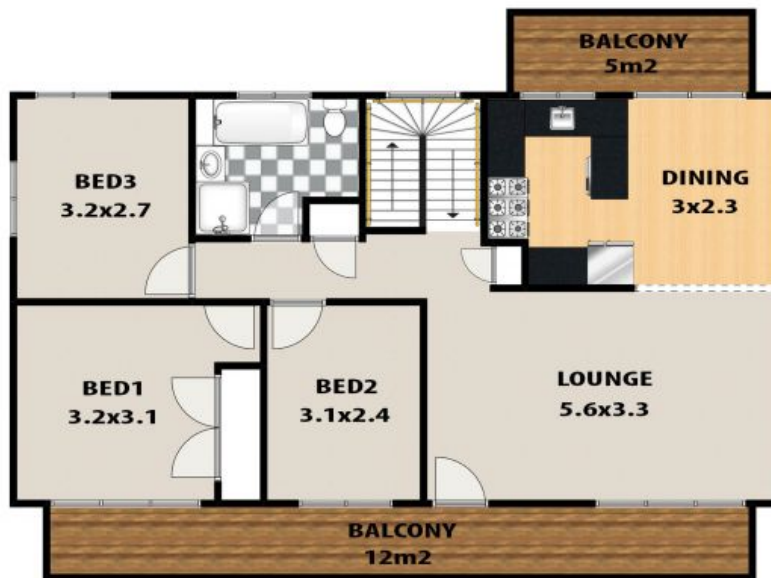
**Council Rates:** \$500.00 p/q

**Water Rates:** \$175.00 p/q

On the ground floor there are endless options to suit your lifestyle. There is currently a carport space for 2 cars which could easily be converted to secure garaging, a combined bathroom and laundry just off the front door plus there is an expansive storage area which offers great potential to increase the usable living space in the way of additional bedrooms, artist's studio or a working from home sp



**LOWER LEVEL**



**LEGEND**



**ENTRY LEVEL**

**18 YESTER ROAD, WENTWORTH FALLS**

This floor plan and/or site plan is an approximation for illustration purposes only. All measurements are approximate and not guaranteed to be exact or to scale. Interested parties should confirm measurements by their own means.

