

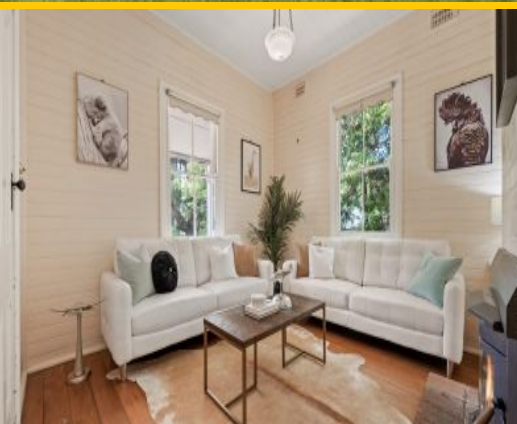
13 Fitzgerald Street Wentworth Falls, NSW



1



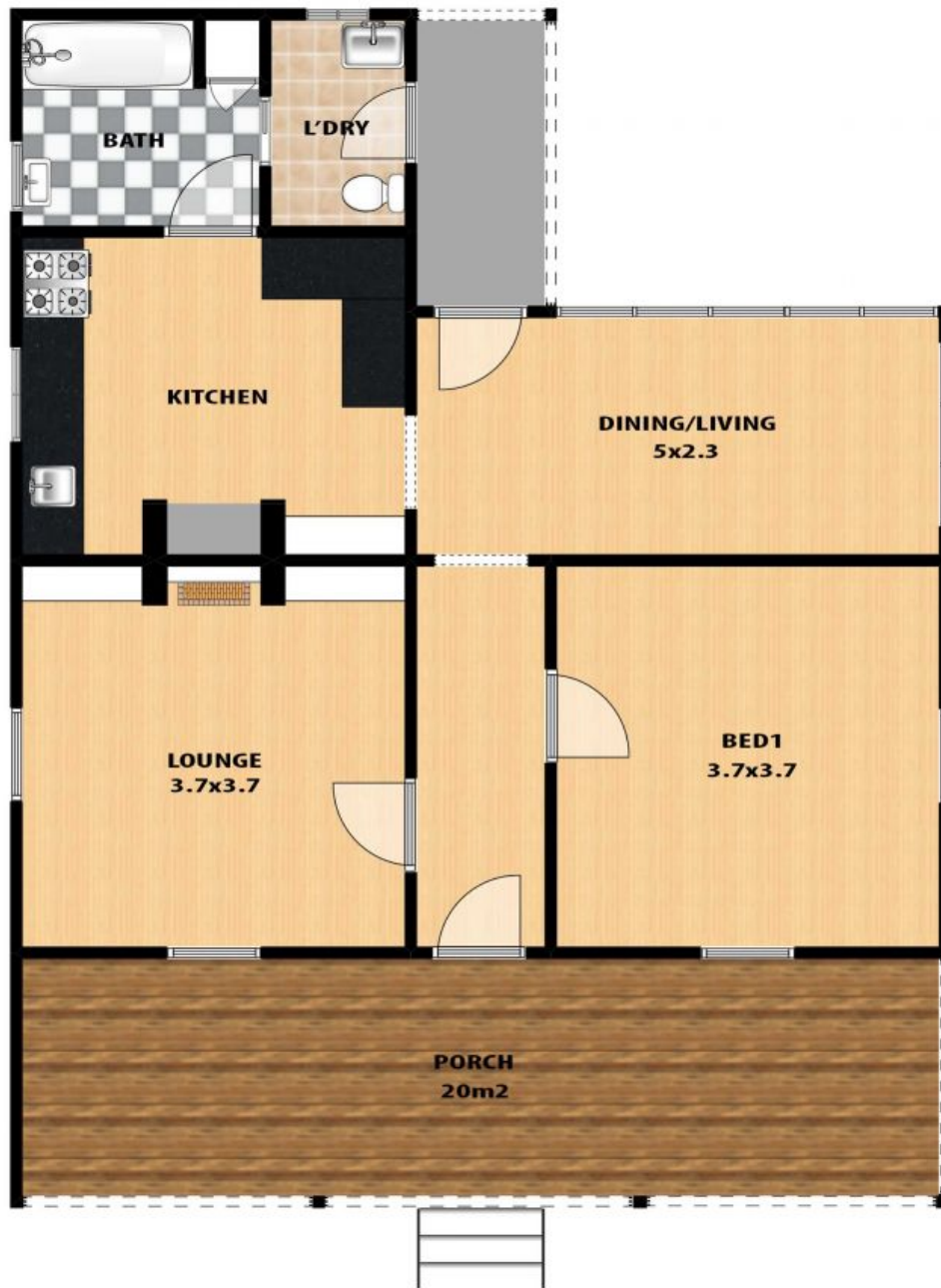
1



MOSMAN COTTAGE ? ORIGINAL SOUTHSIDE
GEM ON 904SQM

Council Rates: \$695.00 p/q

Water Rates: \$175.00 p/q



13 FITZGERALD STREET, WENTWORTH FALLS

This floor plan and/or site plan is an approximation for illustration purposes only. All measurements are approximate and not guaranteed to be exact or to scale. Interested parties should confirm measurements by their own means.

