

9 Yester Road Wentworth Falls, NSW



3



2



2



## QUALITY HOME ON ONE LEVEL

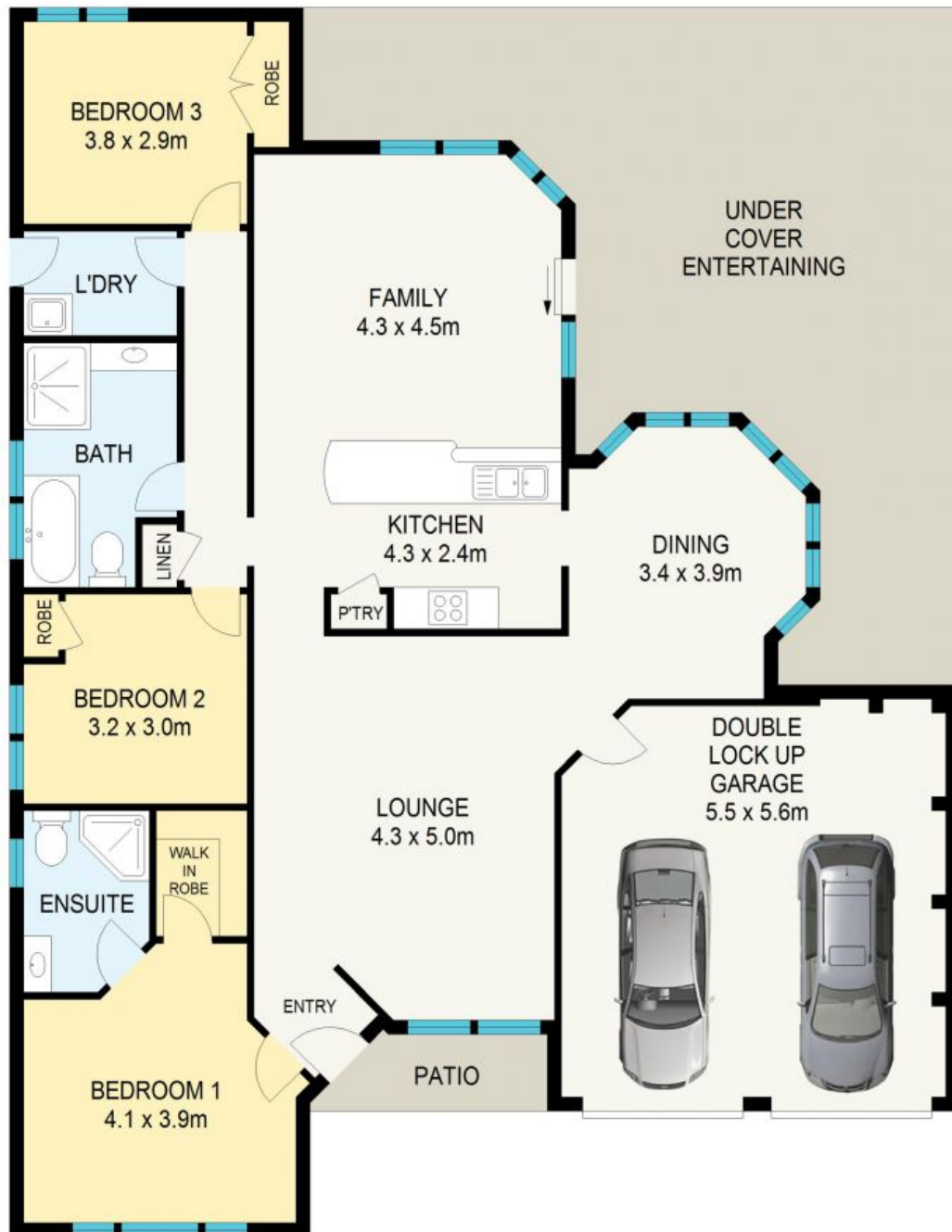
Positioned on a generous 879m<sup>2</sup> block, this fabulous single level brick and tile residence enjoys wonderful sunny views over lovely landscaped gardens and perfect covered outdoor entertaining areas. The home provides an enviable family sanctuary of calm and spaciousness.

Inside, the home brilliantly captures this bright and airy ambience throughout, especially in the open plan family meals and kitchen area that includes a split system air conditioner and plenty of natural light.

This stunning package also includes gas central heating, a double lock-up garage with remote entry and internal access to the house. All this and only 2km to the shops, cafes and trains at Wentworth Falls Village, as well as

**Council Rates:** \$2,228.00/year (approx)

**Water Rates:** \$175.00 p/q



GROUND FLOOR

APPROX : GROSS INTERNAL AREA :- 158 SQM  
APPROX : GROSS EXTERNAL AREA :- 52 SQM



All information contained herein is gathered from sources we believe to be reliable.  
We cannot however guarantee its accuracy and interested parties should make and rely on their own enquiries



9 Yester Road

Wentworth Falls

9 Yester Road

Wentworth Falls, NSW