

24 Scott Avenue Leura, NSW



3



2



2



CoreLogic

Oct 21



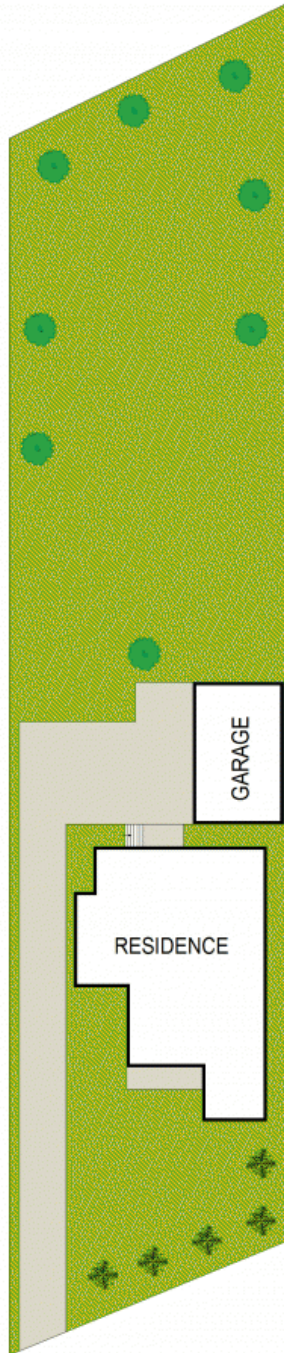
EXCELLENT SOUTH LEURA BRICK HOME ON A LEVEL BLOCK (1,397m2)

Set back from the road and located on the village side of Leura, this updated and well-maintained brick home is move-in ready, providing plenty of options for a growing family looking for an excellent layout, or the perfect property for those simply wanting a great home on a large parcel of land.

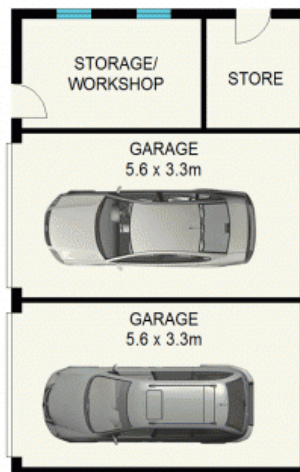
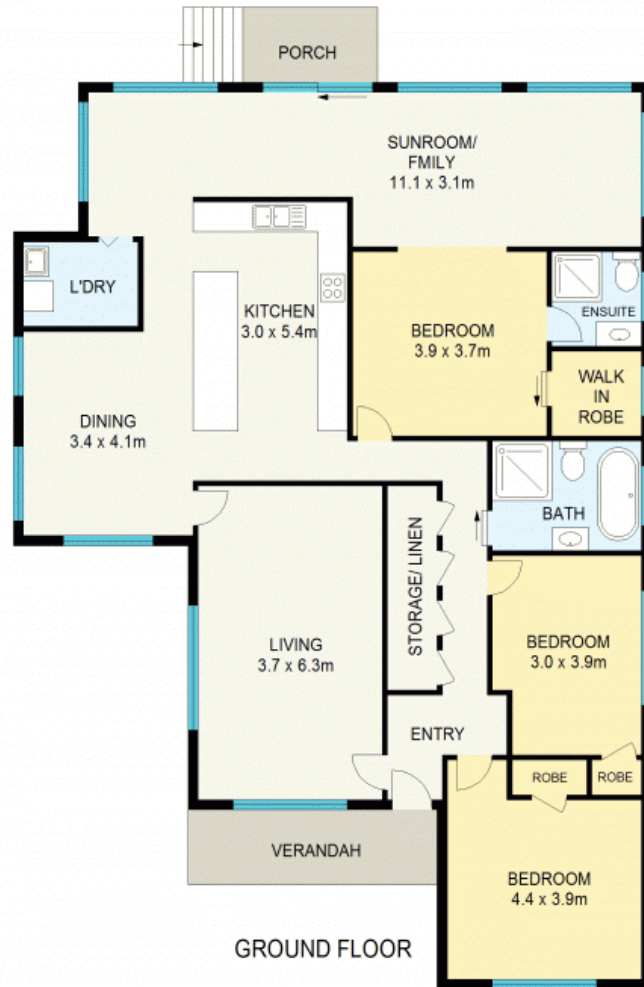
A contemporary neutral colour scheme, polished timber floorboards, large windows, abundant natural light and leafy garden vistas throughout all work together to create a light and spacious ambiance. The lounge room at the front of the home is a lovely space with generous proportions, gas heating and reverse cycle air conditioning, ensuring excellent levels of comfort year-round. The undeniable hub of the home is the spacious, open plan timber kitchen with stainless steel appliances, abundant bench top space, breakfast bar and connects seamlessly with both the dining room and the

Council Rates: \$3,060.00/year (approx)

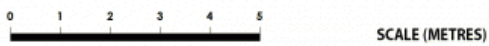
Water Rates: \$175.00 p/q



SITE PLAN (NOT TO SCALE)



APPROX : GROSS INTERNAL AREA :- 230 SQM
APPROX : GROSS EXTERNAL AREA :- 12 SQM



All information contained herein is gathered from sources we believe to be reliable.
We cannot however guarantee its accuracy and interested parties should make and rely on their own enquiries



24 Scott Avenue

Leura

24 Scott Avenue

Leura, NSW

