

TWO HOUSES, ONE LEVEL ACRE & BLUE RIBBON ADDRESS

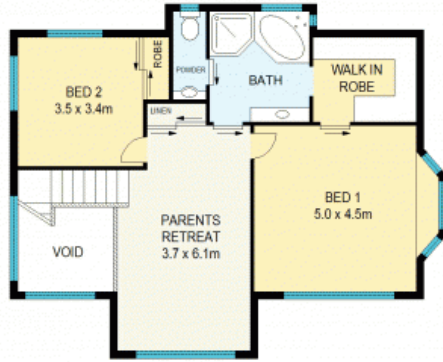
Completely private and perfectly positioned on 4875 square meters, this amazing residence is your dream home come true and represents an unparalleled opportunity to secure one of the Blue Mountain's finest homes in a blue-ribbon location.

The double lock up garage combines storage galore with remote entry and a wine cellar the full width of the garage; it is even big enough to convert to a home office.

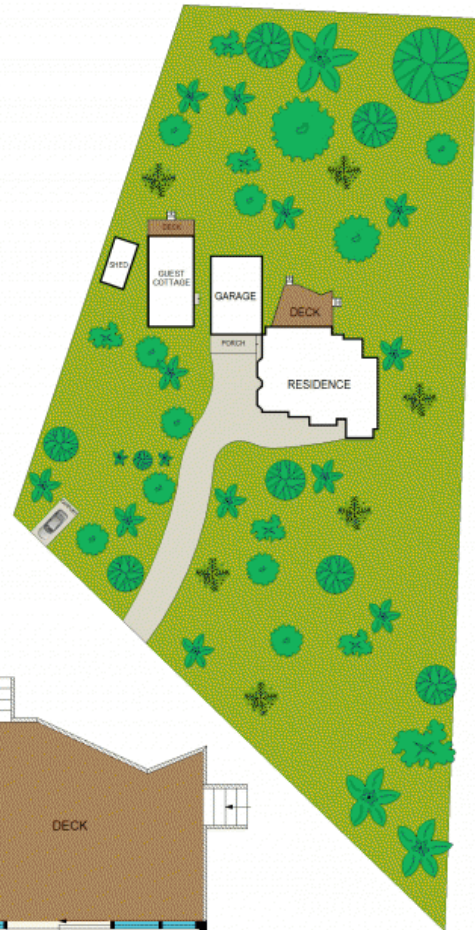
The second dwelling could be used as an income producing holiday rental. It is a fully established one-bedroom cottage with a large kit

Council Rates: \$7,050.00/year (approx)

Water Rates: \$175.00 p/q



FIRST FLOOR



GUEST COTTAGE



GROUND FLOOR

APPROX : GROSS INTERNAL AREA :- 420 SQM
APPROX : GROSS EXTERNAL AREA :- 81 SQM



All information contained herein is gathered from sources we believe to be reliable. We cannot however guarantee its accuracy and interested parties should make and rely on their own enquiries



59 - 61 Sublime Point Road

Leura