



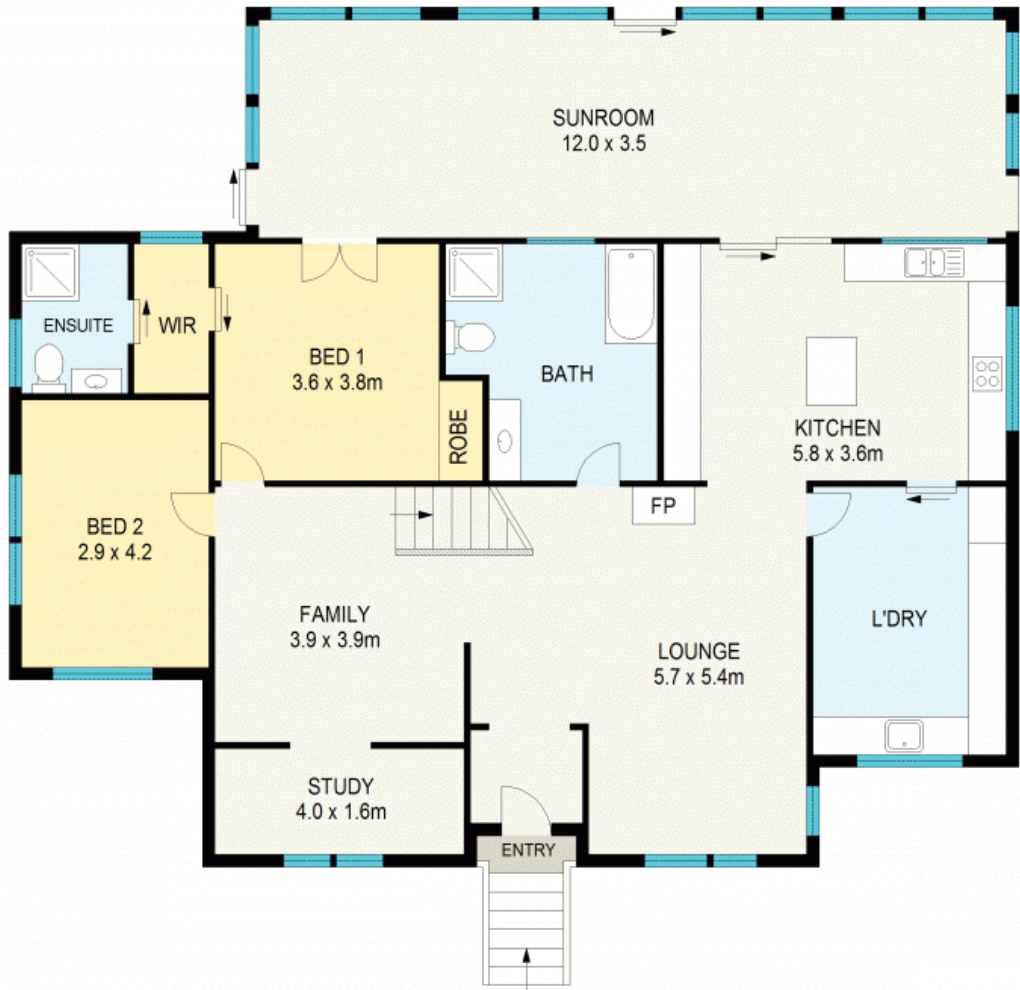
CHARMING PICTURE PERFECT HOME IN A QUIET LOCALE

With an elevated sunny position on the high side of the street, this picture perfect family home has been built with fine attention to detail in a timeless style whilst showcasing a tasteful modern update throughout, all on 866m² in a quiet, hidden leafy pocket of Leura.

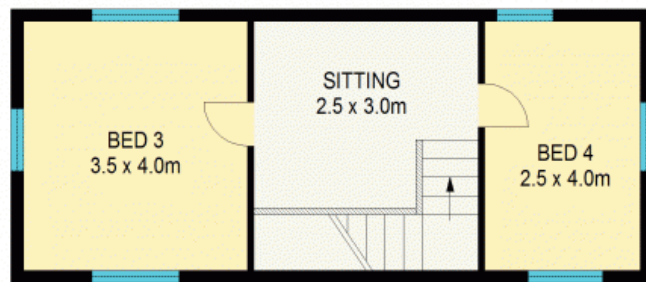
Perfect for entertaining with the absolute wow factor, the stunning has kitchen features Bosch appliances, expansive Caesarstone benchtops, abundant preparation space, an impressive room-length pantry and a moveable centre island, providing a space which is adaptable to your lifestyle. Additionally, the large adjacent laundry doubles as a fabulous butler's pantry, housing the refrigerator, further storage, and a washer/dryer space beneath the benchtop for even more usable space. Leading dir

Council Rates: \$2,210.00/year (approx)

Water Rates: \$175.00 p/q

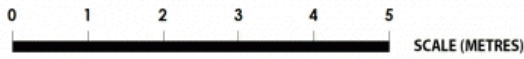


GROUND FLOOR



FIRST FLOOR

APPROX : GROSS INTERNAL AREA :- 222 SQM
APPROX : GROSS EXTERNAL AREA :- 36 SQM



All information contained herein is gathered from sources we believe to be reliable. We cannot however guarantee its accuracy and interested parties should make and rely on their own enquiries



19 Marmion Road

Leura