

33 Toulon Avenue Wentworth Falls, NSW



## STUNNING LEVEL LAND IN ONE OF THE BEST ADDRESSES

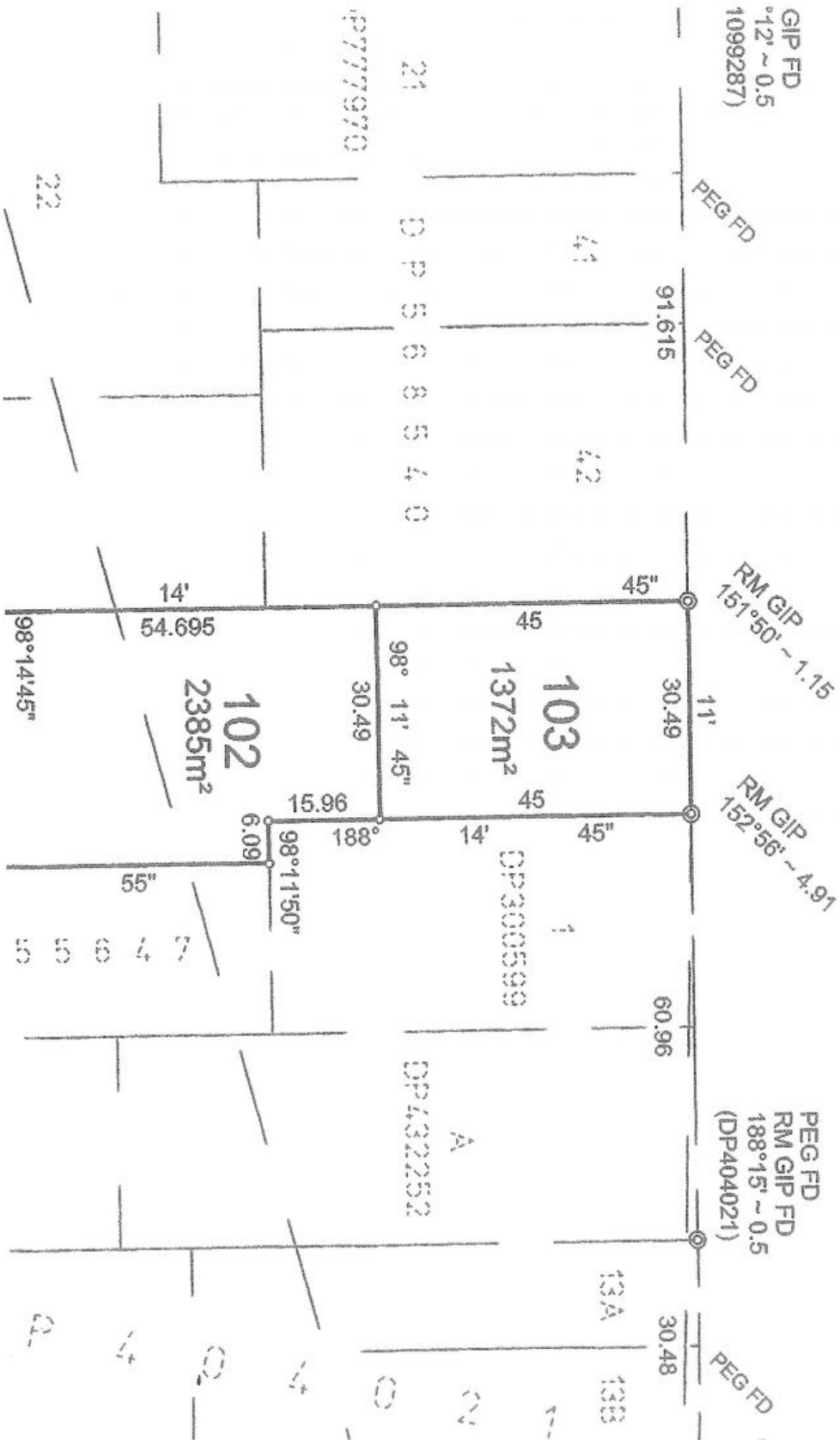
Situated in one of Wentworth Falls' most highly regarded addresses, this completely level prime land is perfect for those looking to build their dream home in a stunning, prestigious location.

**Council Rates:** \$1,454.00/year (approx)

**Water Rates:** \$175.00 p/q

The land has full access to all utilities. ? Water, Electricity, Sewer, Gas and Phone/Internet.

CN



(20.115 WIDE)