



BEAUTIFUL TOWNHOUSE, VILLAGE LOCATION

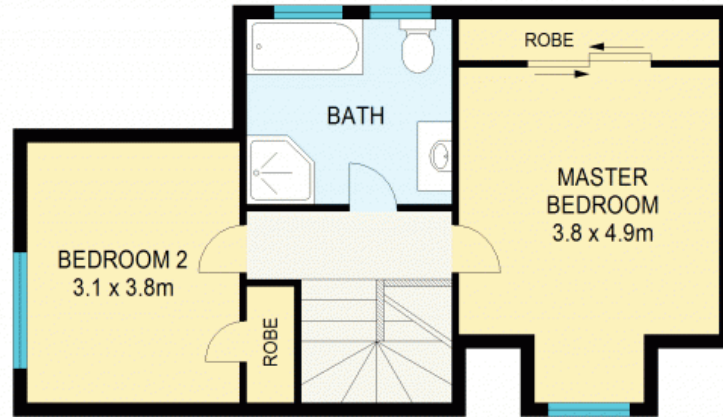
Situated in a highly regarded complex of 4, this exquisite townhouse showcases quality and style whilst being thoughtfully designed for ease of living, all in a fabulous location just metres to everything the Wentworth Falls village has to offer.

With beautiful interiors finished in a contemporary yet classic colour scheme and an abundance of natural light throughout, the home has generous proportions in every room so you won't be compromising on space for downsizing. Showcasing an expansive use of glass which takes in the leafy aspect, the fabulous open plan living and dining room seamlessly leads out through glass sliding doors to the fabulous wrap-around verandah, allowing for year-round entertaining with family and friends. Stone bench tops, stainless steel appliances, gas cooking and abundant preparation space all f

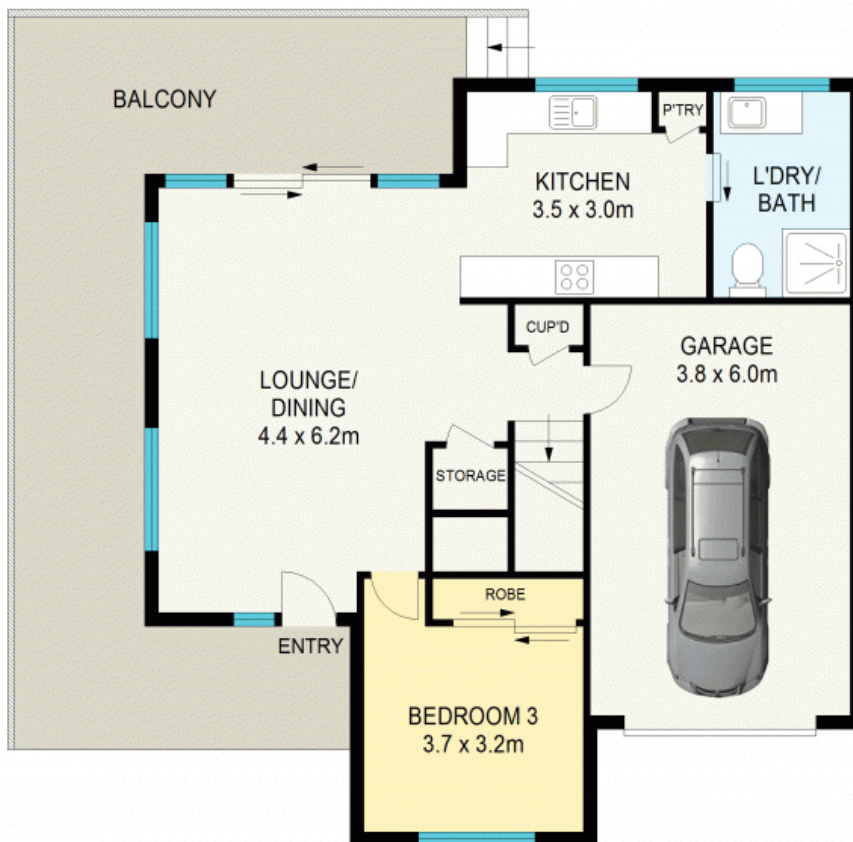
Council Rates: \$320.00 p/q

Water Rates: \$175.00 p/q

Strata Rates: \$950.00 p/q

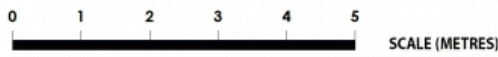


FIRST FLOOR



GROUND FLOOR

APPROX : GROSS INTERNAL AREA :- 135 SQM
APPROX : GROSS EXTERNAL AREA :- 36 SQM



All information contained herein is gathered from sources we believe to be reliable. We cannot however guarantee its accuracy and interested parties should make and rely on their own enquiries



1/5 Page Avenue

Wentworth Falls

1/5 Page Avenue

Wentworth Falls, NSW