



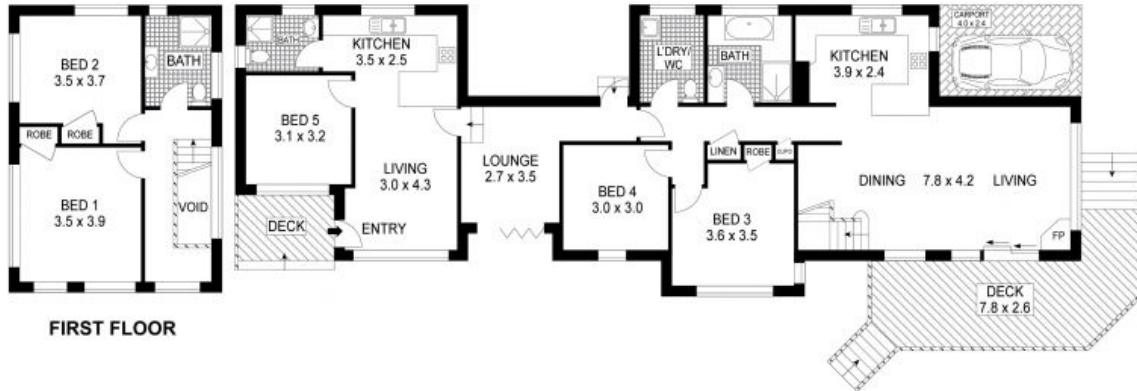
MODERN COUNTRY-STYLE RESIDENCE

With architectural sensitivity to form and function, this stunning residence is positioned on a natural bush block and offers the astute buyer the possibility of a number of uses. Comprising of two levels, it features two self-contained living spaces, each complete with bedrooms and kitchen, plus living and bathroom areas, making it perfect for guest accommodation purposes, or a generous family home with ample room to move.

The kitchens include stainless steel appliances and timber cabinets. Upstairs there are two of the five total bedrooms, both with built-in robes, plus a third bathroom. This level offers the potential for either a parent or teenager retreat, or a home office/studio and media room. The home also includes a separate

Council Rates: \$1,820.00/year (approx)

Water Rates: \$175.00 p/q



FIRST FLOOR

RESIDENCE



Plans shown are for presentation purposes only and are not part of any legal document or title. They are subject to errors, omissions, inaccuracies and should not be used as a sole and accurate reference. Interested parties should make their own inquiries using independent sources.

28 LOFTUS STREET

KATOOMBA