

19 Tableland Road Wentworth Falls, NSW



3



2



1



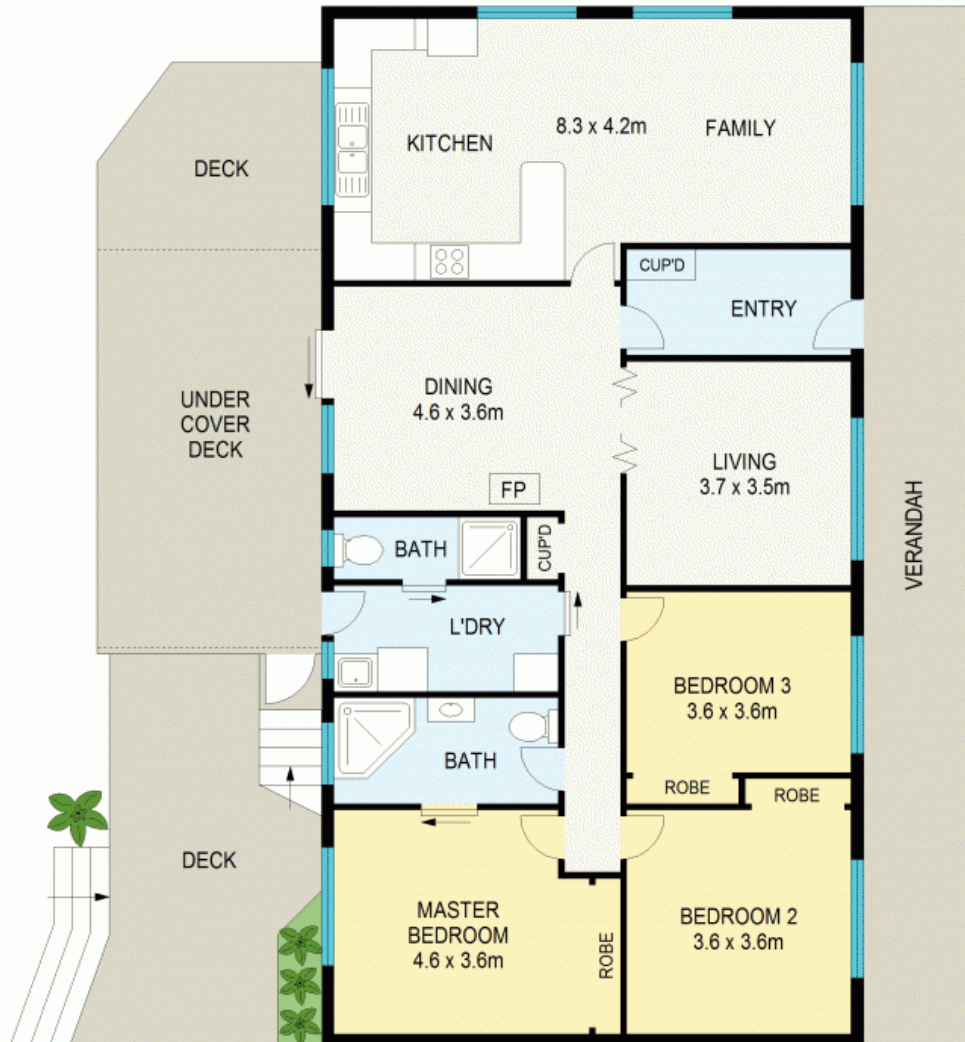
## BEAUTIFUL HOME WITH CHARMING MOUNTAINS CHARACTER

There are three bedrooms in total, all featuring built-in wardrobes and the master bedroom is an impressive size. The main family bathroom has a classic style and provides a versatile two-way layout plus there is a second bathroom and a good size internal laundry which leads out to the deck.

With a great land size of approximately 858sqm and positioned just a short drive to the restaurants, shops, schools, transport and the beautiful Lake of Wentworth Falls, this stunning property provides an excellent opportunity.

**Council Rates:** \$450.00 p/q

**Water Rates:** \$175.00 p/q



GROUND FLOOR

APPROX : GROSS INTERNAL AREA :- 135 SQM  
APPROX : GROSS EXTERNAL AREA :- 85 SQM



All information contained herein is gathered from sources we believe to be reliable.  
We cannot however guarantee its accuracy and interested parties should make and rely on their own enquiries



19 Tableland Road

Wentworth Falls

19 Tableland Road

Wentworth Falls, NSW