



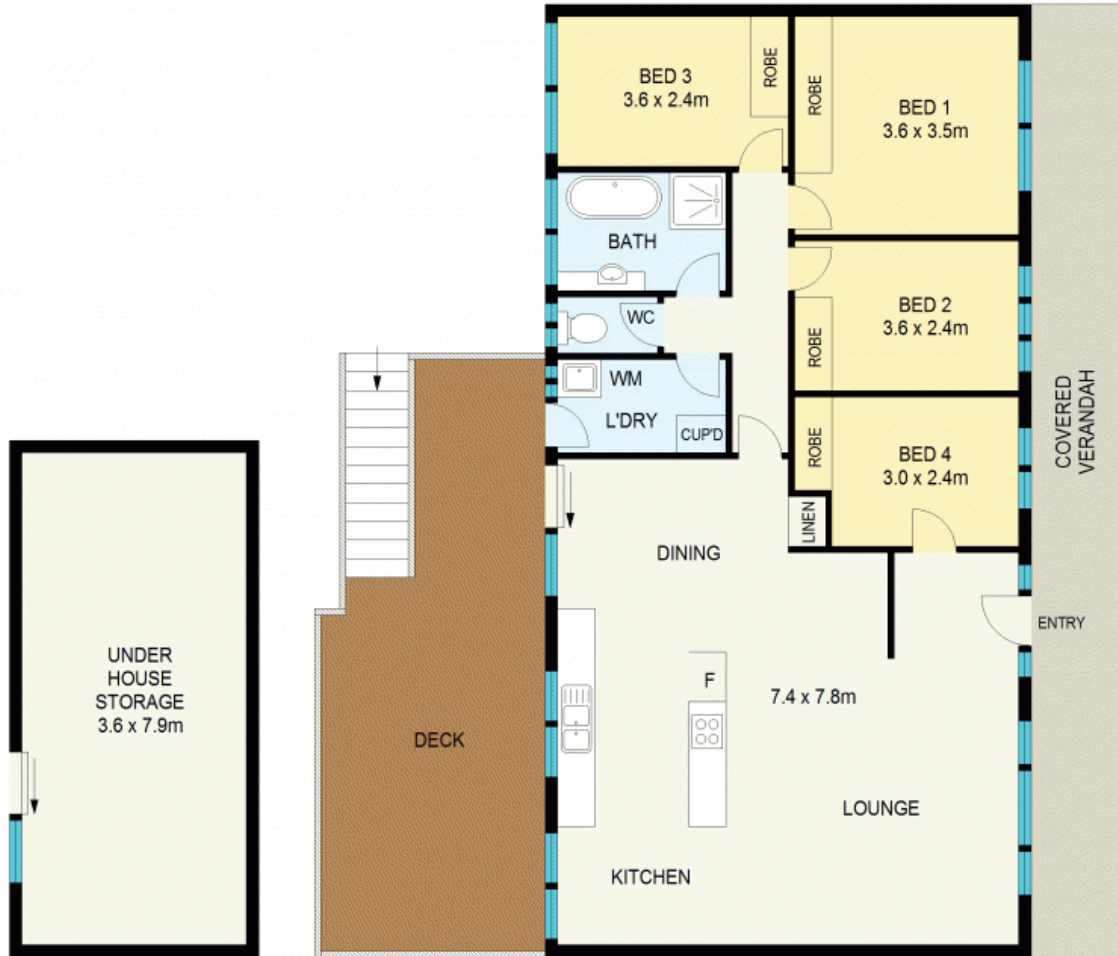
CHARMING HOME WITH AN ELEVATED LEAFY OUTLOOK

There are four bedrooms in total, all featuring built-in wardrobes and the master bedroom is an impressive size for this type of home. The lovely main bathroom has a classic style and provides a versatile layout which is perfect for busy households and guests, plus there is a good size internal laundry which leads out to the deck.

With a great land size of approximately 753sqm and positioned just a short drive to the restaurants, shops, schools, transport and the beautiful Lake of Wentworth Falls, this is an excellent opportunity to secure a wonderful

Council Rates: \$1,765.00/year (approx)

Water Rates: \$175.00 p/q



GROUND FLOOR



APPROX : GROSS INTERNAL AREA :- 138 SQM
APPROX : GROSS EXTERNAL AREA :- 43 SQM



All information contained herein is gathered from sources we believe to be reliable. We cannot however guarantee its accuracy and interested parties should make and rely on their own enquiries



9 Tableland Road

Wentworth Falls

9 Tableland Road

Wentworth Falls, NSW

