

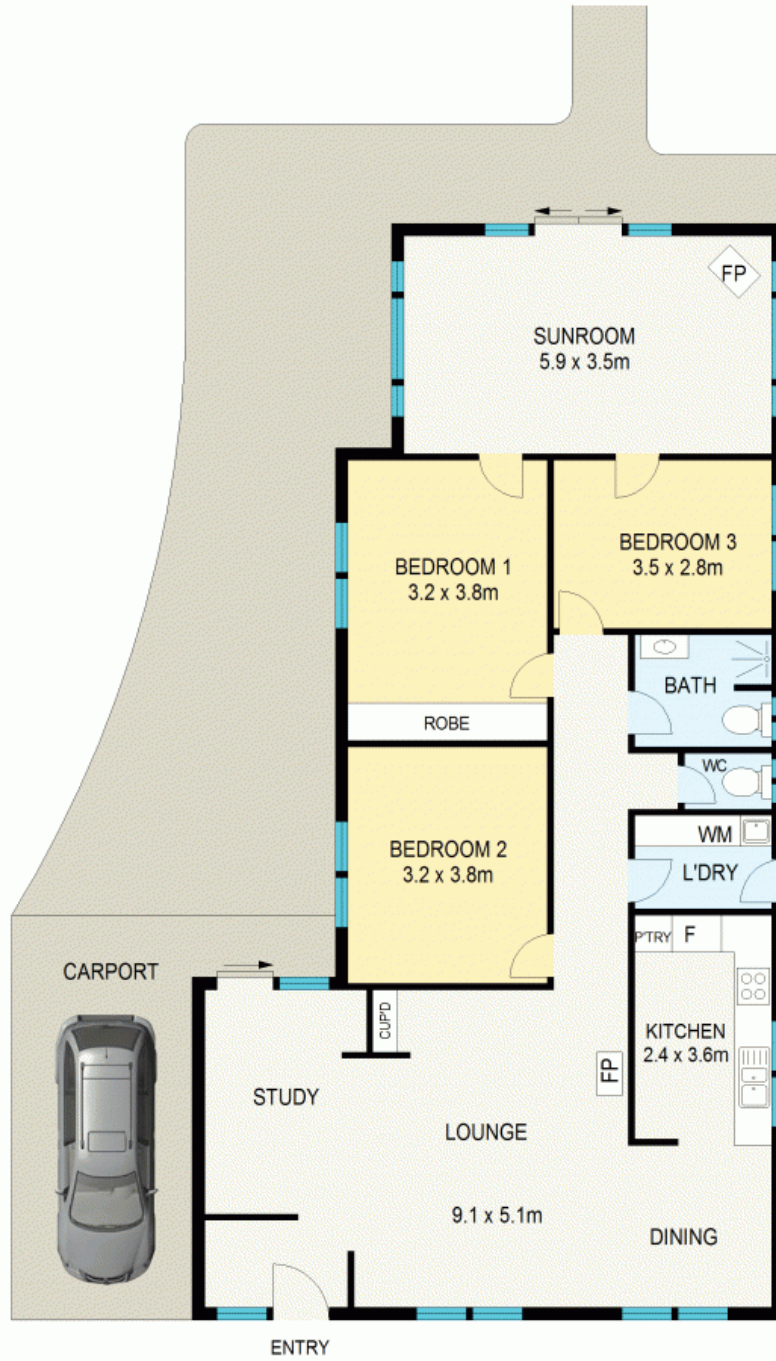


RENOVATED IN A TRANQUIL SETTING

Located in a peaceful setting of South Leura with a reserve to the rear boundary, this well-maintained brick home is move-in ready and provides plenty of options for those wanting a renovated home in a highly regarded location surrounded by nature. A contemporary neutral interior colour scheme and quality floor coverings throughout all work together to create a light and spacious ambience whilst providing a blank canvas to easily incorporate your own style.

The front lounge and dining room off the entrance features a slow combustion freestanding fireplace, perfect for those cozy cooler evenings. Updated and featuring plenty of preparation space, the kitchen makes good use of the space with a stainless-steel stove and rangehood, a pantry, space for a good size fridge and connects seamlessly with the dining area. At the rear of the home is a great North fac

Water Rates: \$175.00 p/q



GROUND FLOOR

APPROX : GROSS INTERNAL AREA : 125 SQM
APPROX : GROSS EXTERNAL AREA : 21 SQM



All information contained herein is gathered from sources we believe to be reliable.
We cannot however guarantee its accuracy and interested parties should make and rely on their own enquiries



15 West Street

Leura

15 West Street

Leura, NSW