

28 Valley Road Wentworth Falls, NSW



3



2



1



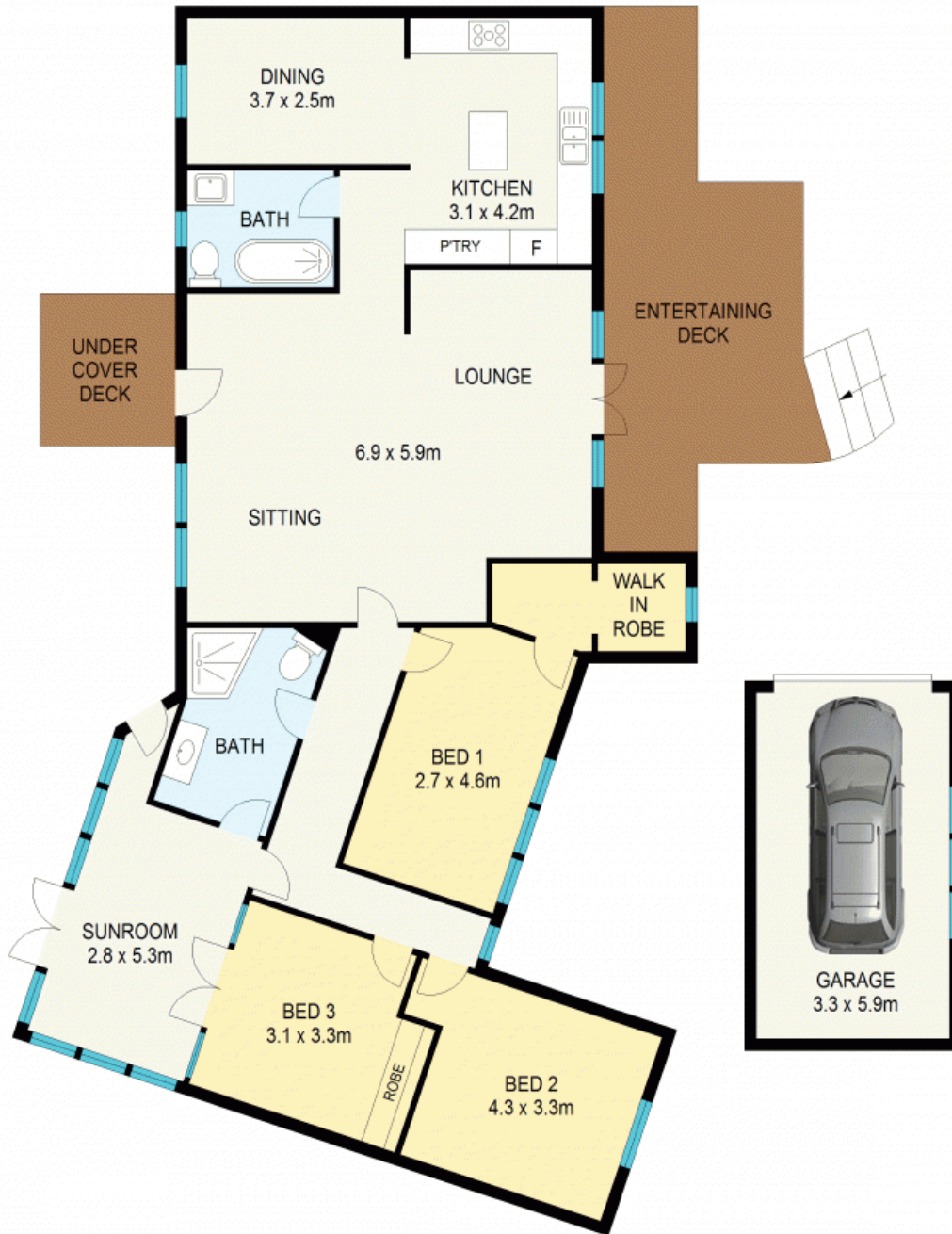
## TIMELESS STYLE, STUNNING VIEWS

With an elevated position capturing stunning escarpment views across to Sublime Point, this timeless weatherboard home sits amongst beautiful established gardens on a generous block of approximately 1,551sqm of prime land.

**Council Rates:** \$2,600.00/year (approx)

**Water Rates:** \$175.00 p/q





GROUND FLOOR

APPROX : GROSS INTERNAL AREA :- 142 SQM  
APPROX : GROSS EXTERNAL AREA :- 49 SQM



All information contained herein is gathered from sources we believe to be reliable.  
We cannot however guarantee its accuracy and interested parties should make and rely on their own enquiries



28 Valley Road

Wentworth Falls

28 Valley Road

Wentworth Falls, NSW

