

53 Pritchard Street Wentworth Falls, NSW



4



2



2



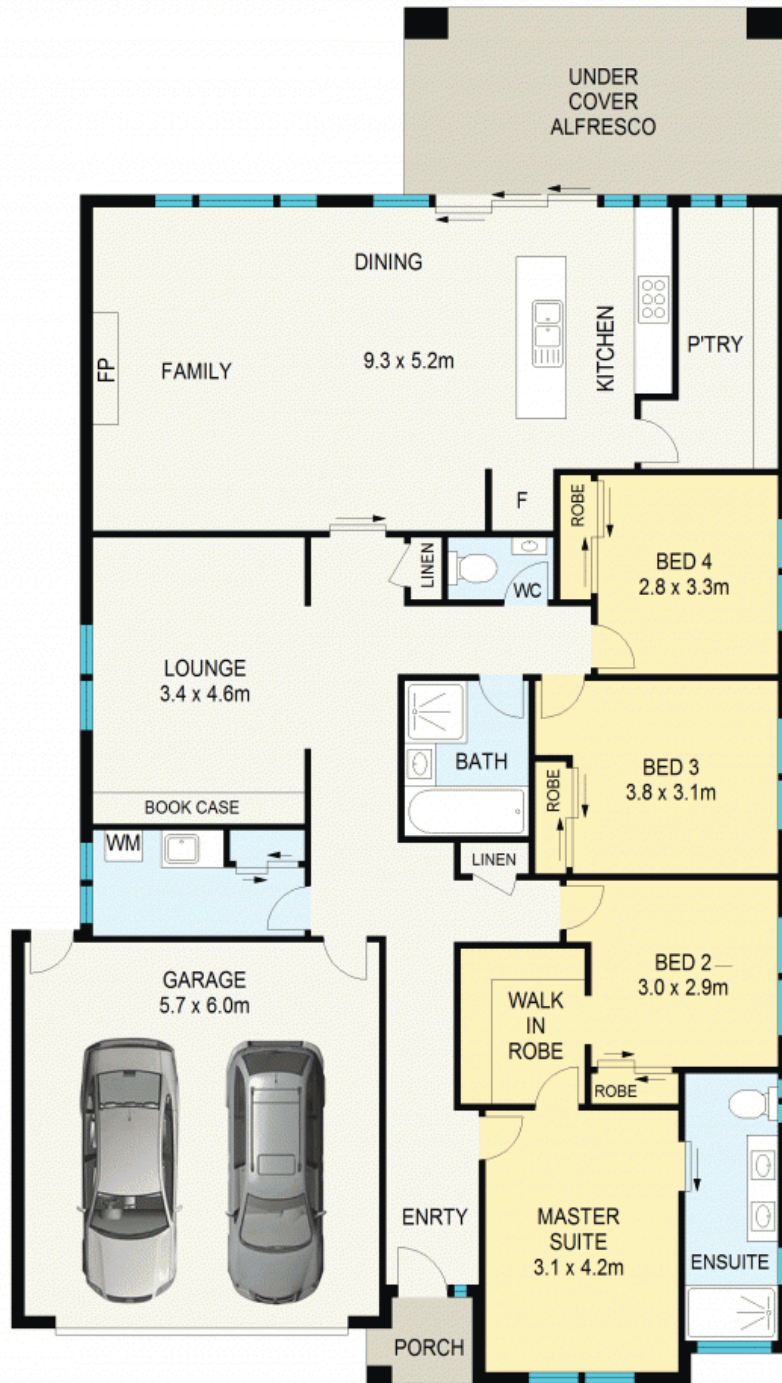
## LUXURY LEVEL LIVING

Nestled within a highly regarded pocket of South Wentworth Falls is this single level, near new Hotondo home with a great 18 metre frontage which was completed in 2018. A residence of high-end finishes and a contemporary yet classic style, the home provides a terrific layout both inside and out.

**Council Rates:** \$2,860.00/year (approx)

**Water Rates:** \$175.00 p/q

Boasting a sizeable 1,014sqm parcel of land with a level landscaped backyard, this home provides a private and secure haven for the whole family to enjoy, all situated within easy access to the cafes, schools and amenities of



GROUND FLOOR

APPROX : GROSS INTERNAL AREA :- 205 SQM  
APPROX : GROSS EXTERNAL AREA :- 21 SQM



All information contained herein is gathered from sources we believe to be reliable. We cannot however guarantee its accuracy and interested parties should make and rely on their own enquiries



53 Pritchard Street

Wentworth Falls

53 Pritchard Street

Wentworth Falls, NSW

