

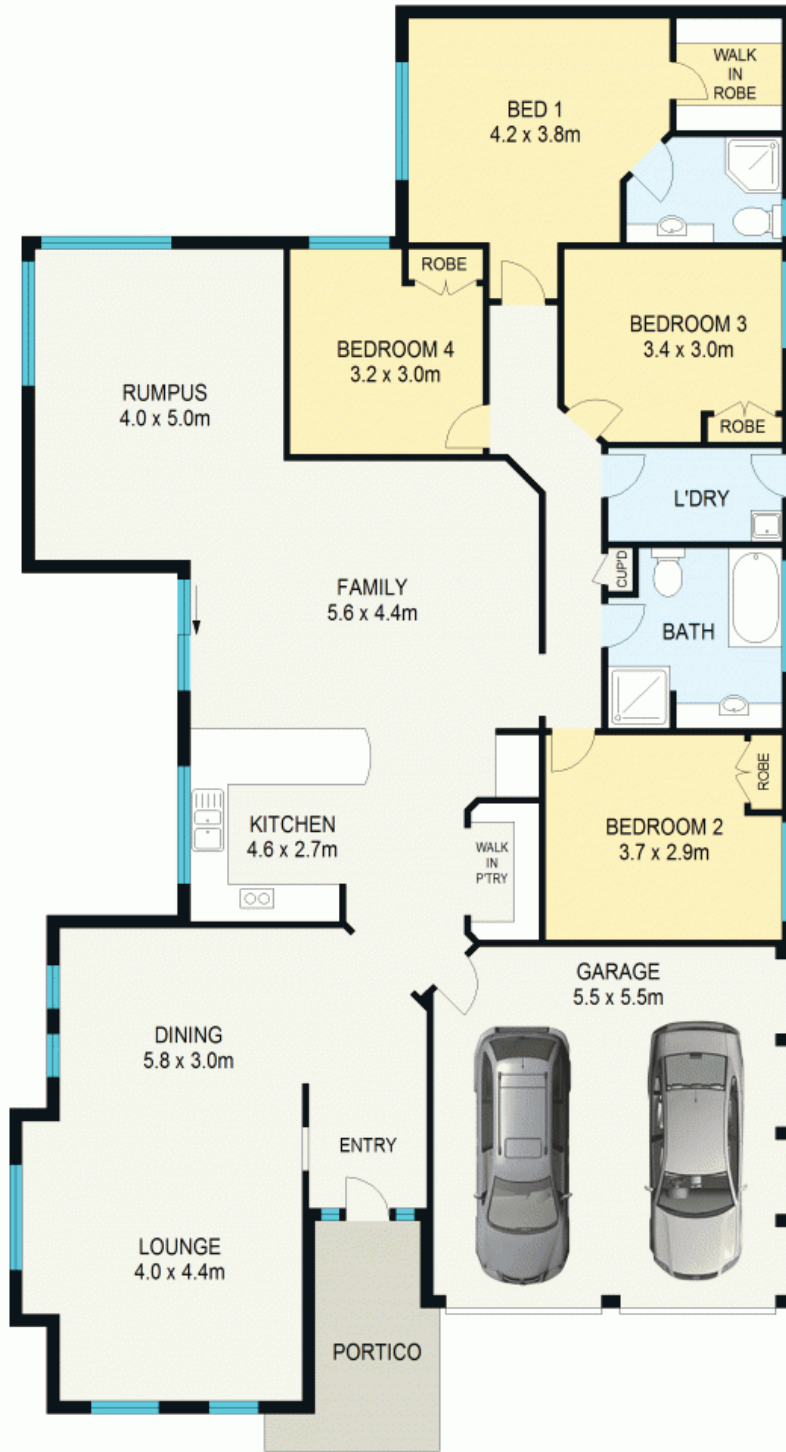


## EXCLUSIVE LEURA SPRINGS

Positioned within the exclusive Leura Springs gated community among beautifully manicured and private gardens, this completely level home combines traditional lines and classic aesthetic touches complete with modern style. Bright and sunny throughout, the residence showcases a fabulous layout providing unparalleled accommodation and a terrific home environment for your family to enjoy.

With a large walk-in pantry, stainless steel appliances including a dishwasher and a raised oven, stone bench tops with abundant preparation space and a breakfast bar, the kitchen is perfect for both the chef and the entertainer. Connecting seamlessly with both the indoor living spaces and the stunning landscaped garden, the outdoor dining spaces provide the perfect space to enjoy the Blue Mountains li

**Council Rates:** \$594.00 p/q  
**Water Rates:** \$175.00 p/q  
**Strata Rates:** \$400.00 p/q



GROUND FLOOR

APPROX : GROSS INTERNAL AREA :- 213 SQM  
APPROX : GROSS EXTERNAL AREA :- 7 SQM



All information contained herein is gathered from sources we believe to be reliable.  
We cannot however guarantee its accuracy and interested parties should make and rely on their own enquiries



5/112 Craigend Street

Leura