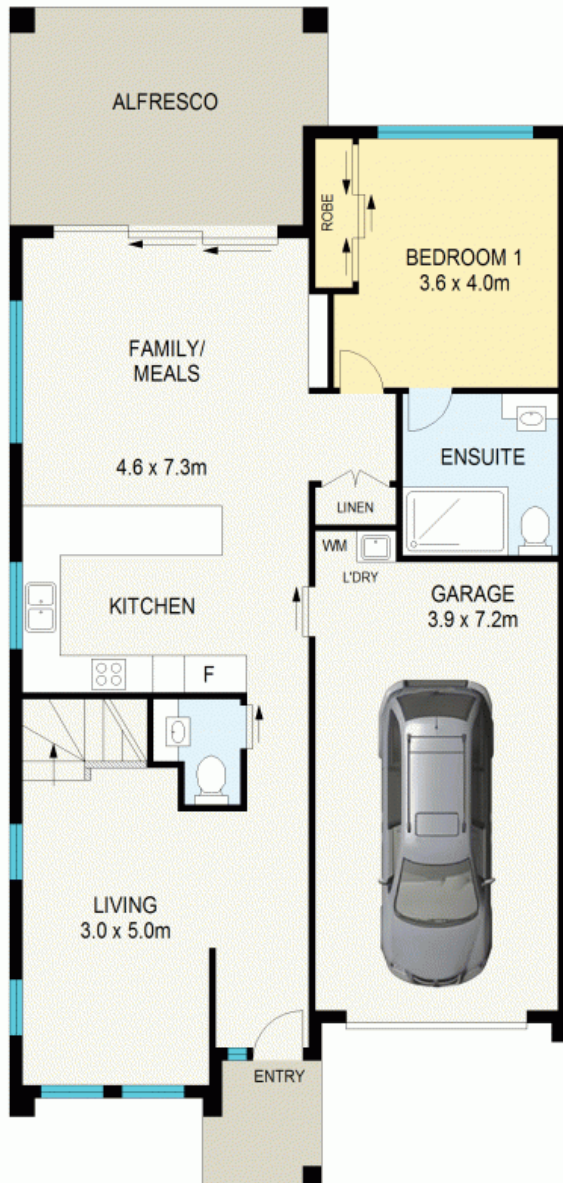




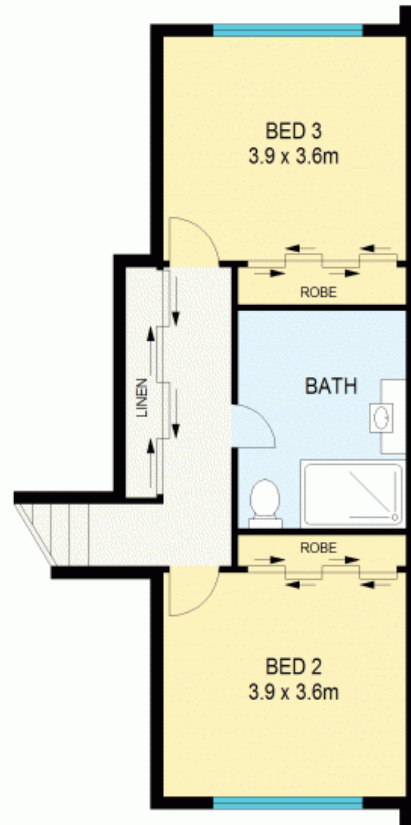
LUXURY OVER 55S VILLA

Situated in the luxury boutique Cascade Court over 55's villa complex just 1.1km to the Wentworth Falls village, this exquisite townhouse showcases ultimate quality and style whilst being thoughtfully designed for ease of living.

With sleek interiors finished in a contemporary yet classic colour scheme and an abundance of natural light throughout, the home has generous proportions so you won't be compromising on space for downsizing. Showcasing feature 3 step cornices, beautiful floating timber floors and an expansive use of double glazing, the fabulous open plan living room looks out over the courtyard yard with the fabulous covered outdoor entertaining area, all connected seamlessly through glass sliding doors. Waterfall stone bench top, stainless steel appliances, gas cooking, a breakfast bar and abundant preparation space all feature in the absolutely stunning kitchen. At the front of the



GROUND FLOOR



FIRST FLOOR

APPROX : GROSS INTERNAL AREA :- 169 SQM
APPROX : GROSS EXTERNAL AREA :- 21 SQM



All information contained herein is gathered from sources we believe to be reliable.
We cannot however guarantee its accuracy and interested parties should make and rely on their own enquiries



8 /41 - 45 Cascade Street

Wentworth Falls