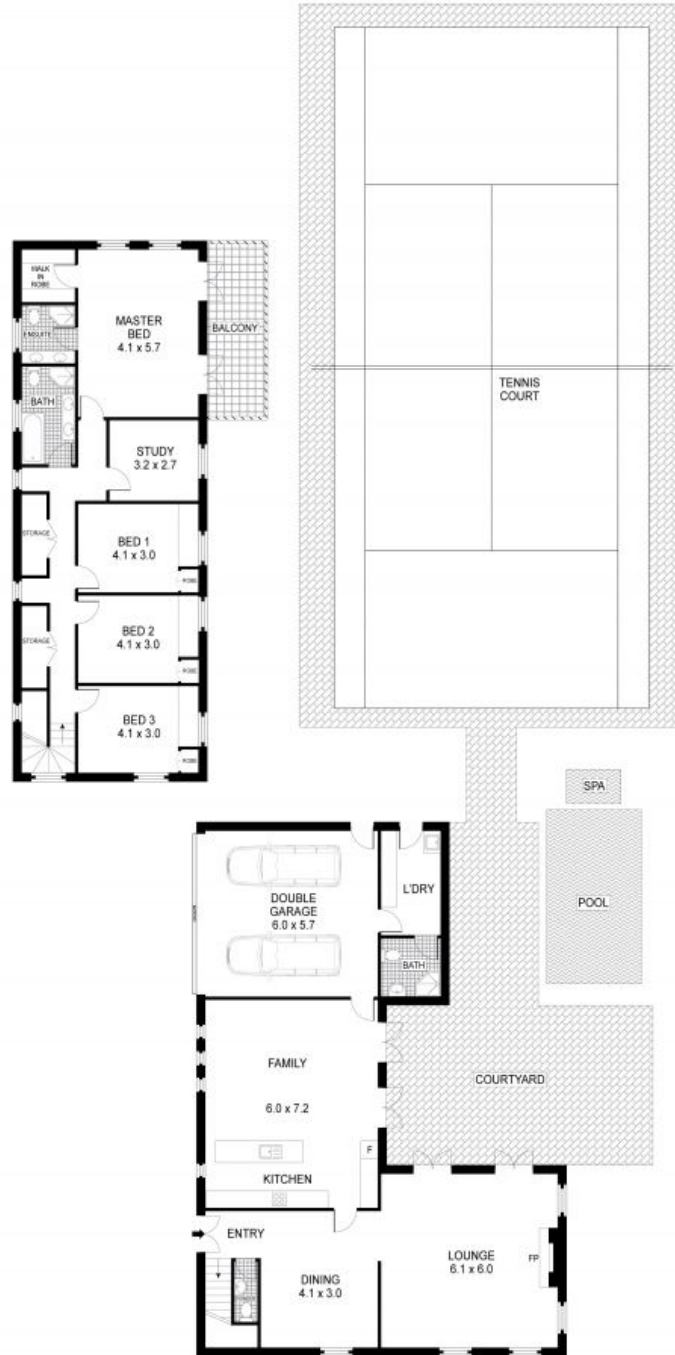




## A SLICE OF TUSCAN SUN

This stunning, architecturally designed family home perfectly balances a rustic Italian farmhouse ambience with contemporary design features and every modern luxury and convenience. Immaculately finished throughout and positioned on a private and generous parcel of land (2967m<sup>2</sup>), this showcase residence also includes a saltwater pool, spa and competition size, East West tennis court.

Situated opposite the serene natural wonders of the Charles Darwin Walk, this superb residence enjoys a gorgeous, peaceful setting and yet is only moments away from the cafes and shops of Wentworth Falls Village, as well as local schools and the train station. A rare and unique offering, this is a terrific opportunity



0 1 2 3 4 5 METRES

Plans shown are for presentation purposes only and are not part of any legal document or title. They are subject to errors, omissions, inaccuracies and should not be used as a sole and accurate reference. Prospective parties should make their own inquiries using independent sources.



7-9 JAMIESON STREET

WENTWORTH FALLS