

51 Toulon Avenue Wentworth Falls, NSW



4



2



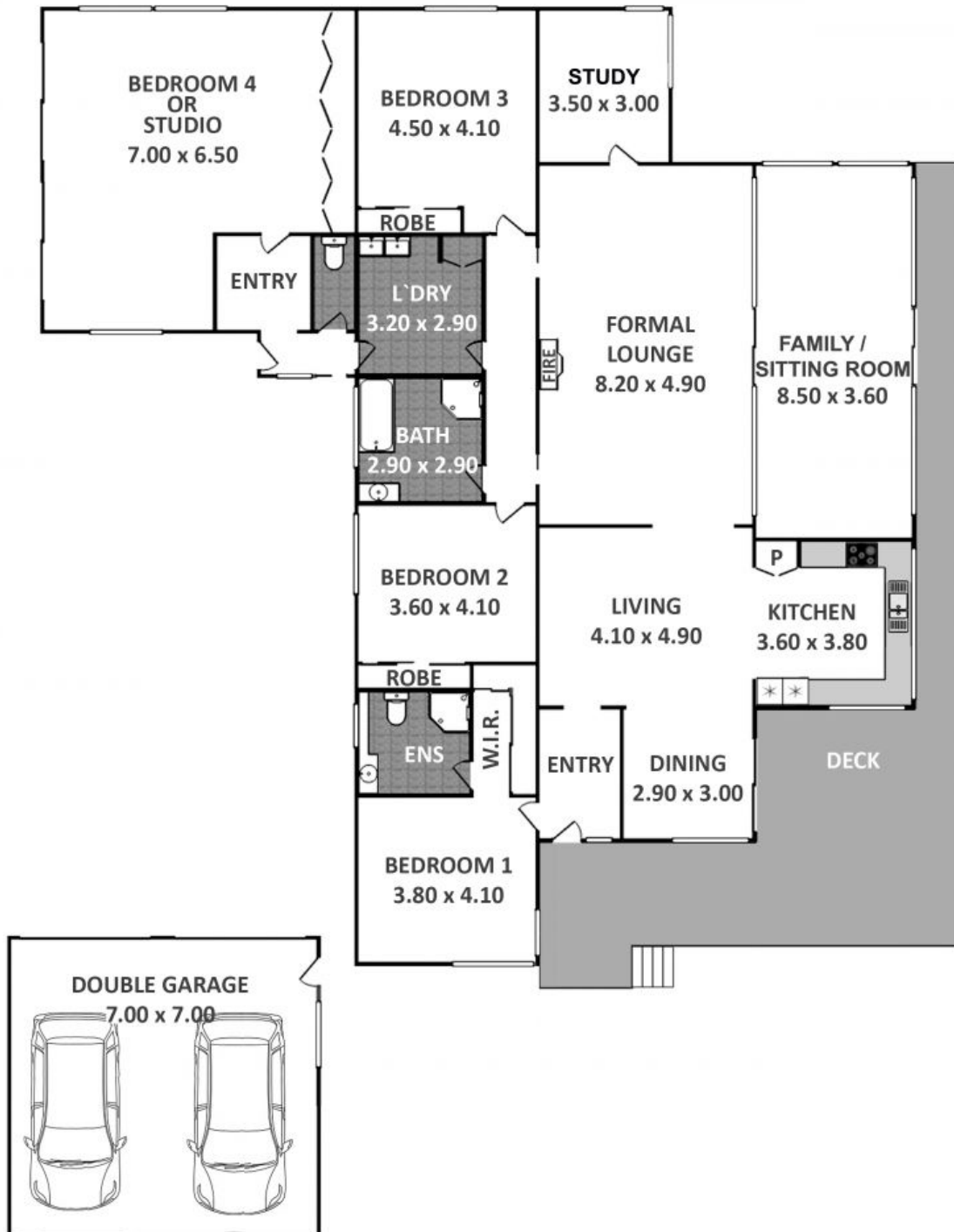
4



## WINTERWOOD PRESTIGE STYLE AND LUXURY

A stunning and expansive contemporary family residence, Winterwood is the perfect expression of modern Australian country style and meticulous architectural design. Positioned on a level 1636m<sup>2</sup> parcel of land, this sunny home is north facing and enjoys complete privacy amid beautiful landscaped gardens, lawn areas and established trees.

This superb package also includes a double garage and separate study. With gorgeous green views out across the golf course and only minutes to schools, trains and the shops and cafes of Wentworth Falls village, this sensational residence is wonderfully positioned and offers astute buyers the opportunity to acquire



Plans shown are for presentation purposes only and are not part of any legal document or title. They are subject to errors, omissions, inaccuracies and should not be used as a sole and accurate reference. Interested parties should make their own inquiries using independent sources.

## 51 Toulon Avenue WENTWORTH FALLS