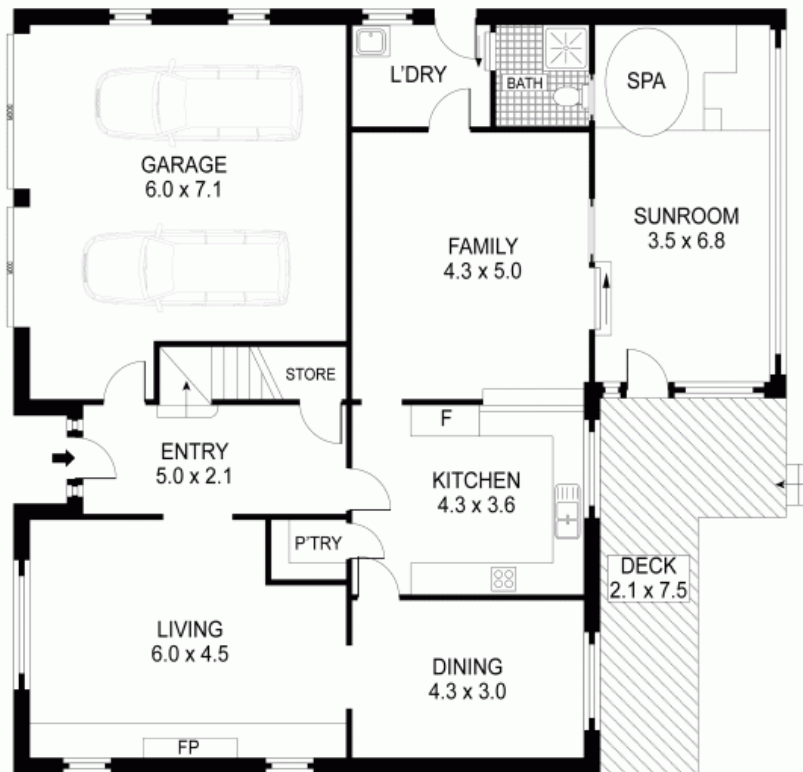




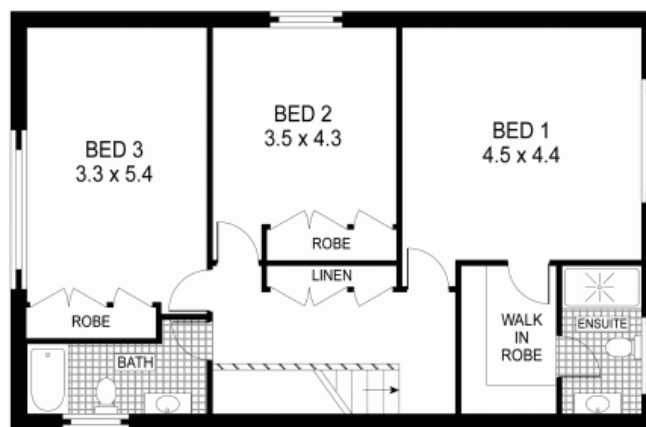
NOTHING TO SPEND - NEAR THE GOLF COURSE

Located only moments from beautiful Wentworth Falls Lake, this double brick and timber home is the perfect choice for those searching for privacy, space and a touch of retro style to enjoy and love. With a warm, exposed-brick interior, plus the luxury of a full-sized timber hot tub in the large sunroom with garden views, four seasons in the mountains have never looked so good.

The clever interior floorplan ensures a quiet and easy-flowing ambience between rooms. A tiled foyer leads to a spacious formal lounge with fireplace, which in turn leads to a large formal dining room with access to the fully equipped new designer kitchen. Featuring plenty of bench and cupboard space, it has a lovely garden outlook and connects directly with the family living area. Sliding doors access



GROUND FLOOR



FIRST FLOOR



INT: 270 m²
EXT: 18 m²
TOTAL: 288 m²



Plans shown are for presentation purposes only and are not part of any legal document or title. They are subject to errors, omissions, inaccuracies and should not be used as a sole and accurate reference. Interested parties should make their own inquiries using independent sources.

2 MIMOSA AVENUE

WENTWORTH FALLS