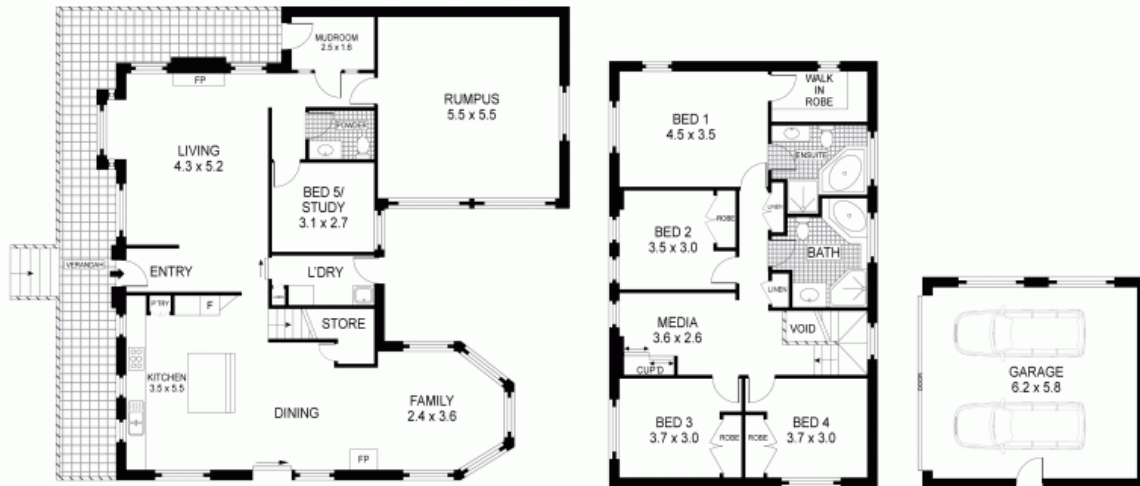


## GRAND FAMILY HOME

Located in one of Leuras premier streets, stunning Windermere House represents grand living at its absolute best. Drive through the electric front gate and the effect is immediate privacy, space, style and luxury, all combined in perfect balance. This immaculately finished two-storey residence is a dream home for the entire family.

Inside, the free-flowing, expansive floorplan includes sumptuous formal living, a large rumpus room, convenient mudroom directly off the undercover verandah, and a home office/study or fifth bedroom.

The spacious contemporary gourmet kitchen is a chefs delight. Featuring American Oak, double granite benchtops and European stainless steel appliances, its flooded with natural light and overlooks a wonderful open plan dining



**RESIDENCE**

0 1 2 3 4 5  
SCALE METRES

Plans shown are for presentation purposes only and are not part of any legal document or title. They are subject to errors, omissions, inaccuracies and should not be used as a sole and accurate reference. Interested parties should make their own inquiries using independent sources.

**33 SUBLIME POINT ROAD**



**LEURA**