



## LIGHT FILLED FAMILY HOME

With abundant natural light throughout and a fabulous layout, this terrific brick and clad residence is the perfect family home, providing great levels of space, comfort and convenience. Well presented with fresh paint and new carpeting throughout, it also enjoys an elevated position on an easy care block of approximately 702m<sup>2</sup>, with a great level lawn in the back yard.

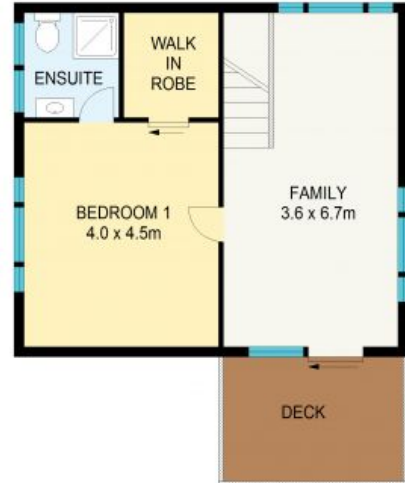
Upstairs has the WOW factor with a second living room flooded with natural light and showcases a beautiful tree top outlook to the east, south and west through large windows and glass doors which lead out to a fabulous entertaining deck. The upstairs master bedroom is a great size with a walk in wardrobe complete with shelving and an ensuite. This great home is move-in ready and also includes the conven



GROUND FLOOR



GROUND FLOOR



FIRST FLOOR

APPROX. GROSS INTERNAL AREA - 133 SQM  
APPROX. GROSS EXTERNAL AREA - 47 SQM



All information contained herein is gathered from sources we believe to be reliable. We cannot however guarantee its accuracy and interested parties should make and rely on their own enquiries.

61 Tableland Road



Wentworth Falls