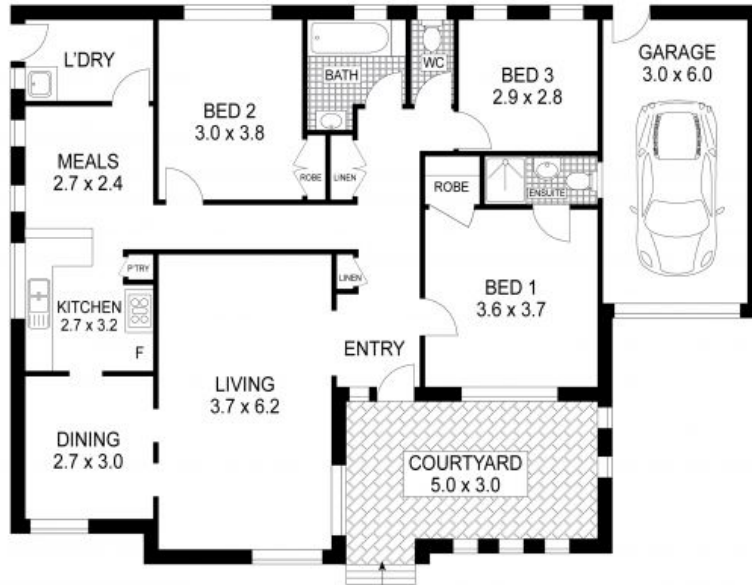




FAMILY HOME WITH EURO-STYLE

Incorporating classic European-style exterior touches, this terrific painted brick and tile family home offers excellent buying in a prime Blue Mountains location. Positioned on a generous, fully fenced 1341 m2 block, with an established low-maintenance garden featuring grass areas and established trees, it provides the perfect, comfortable abode for your family.



RESIDENCE



Plans shown are for presentation purposes only and are not part of any legal document or title. They are subject to errors, omissions, inaccuracies and should not be used as a sole and accurate reference. Interested parties should make their own inquiries using independent sources.

62 QUEENS ROAD

LEURA