

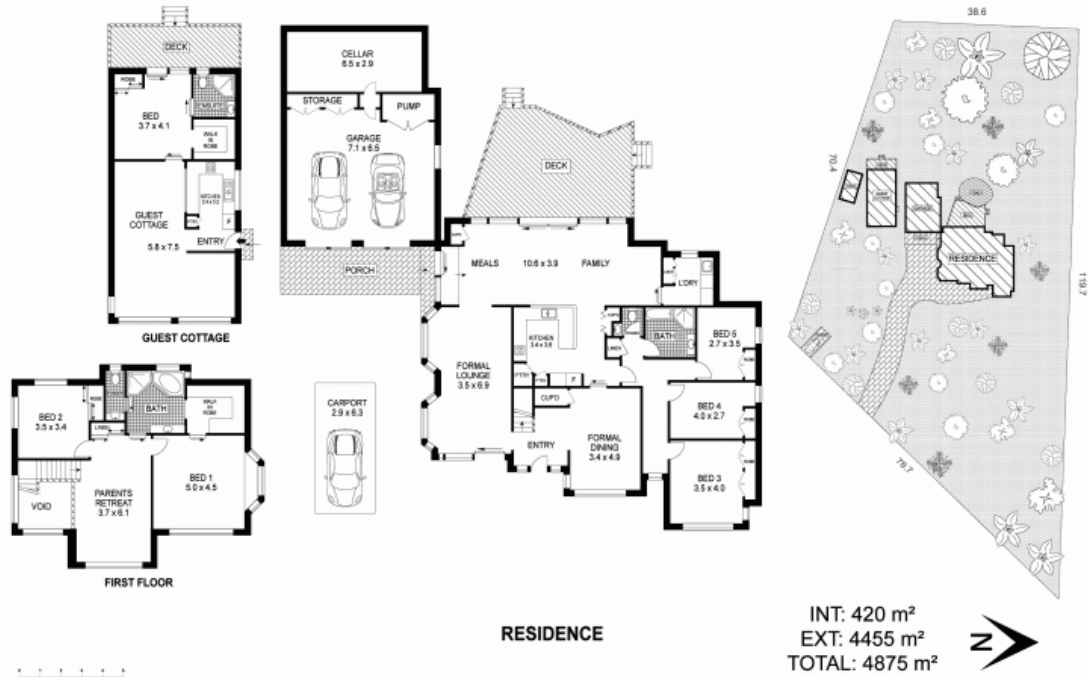


## TWO HOUSES, ONE LEVEL ACRE & BLUE RIBBON ADDRESS

Completely private and perfectly positioned on 4875 square meters, this amazing residence is your dream home come true and represents an unparalleled opportunity to secure one of the Blue Mountain's finest homes in a blue-ribbon location.

The double lock up garage combines storage galore with remote control doors and a wine cellar the full width of the garage; it is even big enough to convert to a home office.

The second is currently being used as an income producing holiday rental and is a fully established one-bedroom cottage with a large ki



INT: 420 m<sup>2</sup>  
EXT: 4455 m<sup>2</sup>  
TOTAL: 4875 m<sup>2</sup>

Plans shown are for presentation purposes only and are not part of any legal document or title. They are subject to errors, omissions, inaccuracies and should not be used as a sole and accurate reference. Interested parties should make their own inquiries using independent sources.

59-61 SUBLIME POINT ROAD

LEURA